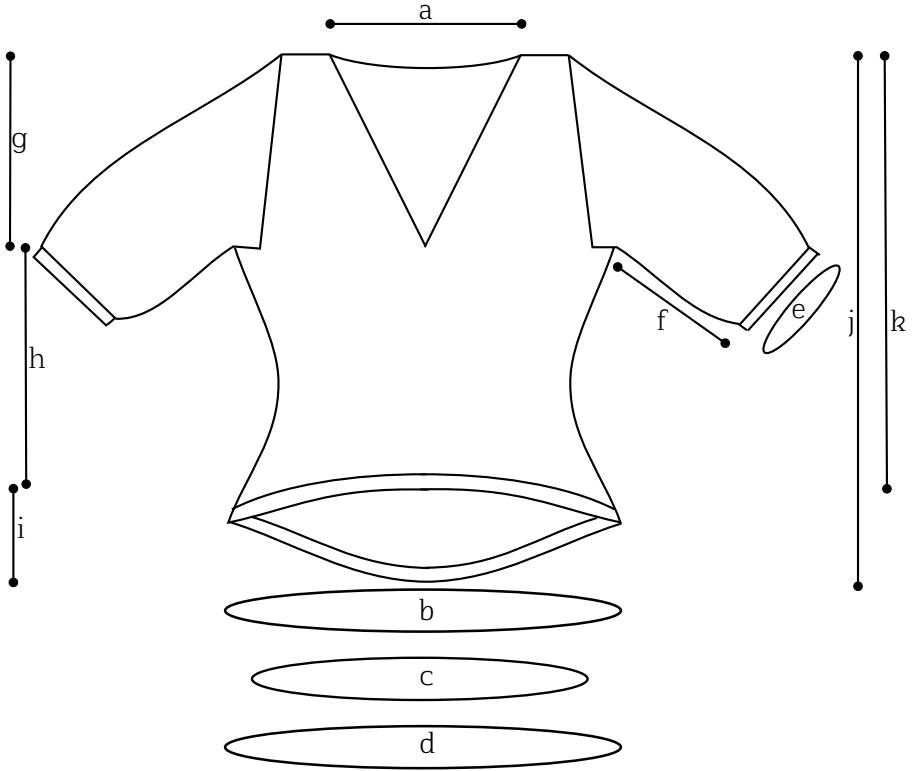


Tangerine Zest



- a) Width of neck opening: 9.5 (10, 11, 11, 12, 12.5, 13)"
- b) Bust circumference: 38 (39.75, 43.5, 48.25, 52, 55, 60.25)"
- c) Waist circumference: 33.25 (37, 40.75, 44.5, 49, 52, 53.75)"
- d) Hip circumference: 38 (41.75, 46.25, 50, 54.75, 57.5, 59.25)"
- e) Upper arm circumference: 11.5 (12, 13.5, 14.75, 17.25, 18.5, 20.5)"
- f) Underarm length incl. hem: 11.75 (11.75, 12, 12, 12.25, 12.25, 12.75)"
- g) Armhole depth: 8.5 (9, 9.5, 10, 10.5, 11, 11.5)"
- h) Front to Armhole length: 9.25 (9.25, 8.75, 9, 8.5, 8.25, 8.5)"
- i) Back to front length difference: 7 (8, 9, 9, 10.25, 10.25, 10.75)"
- j) Back to upper shoulder length: 30 (31, 32.25, 32.75, 34.25, 34.25, 35.25)"
- k) Front to upper shoulder length: 23 (23, 23.25, 23.75, 24, 24, 24.5)"