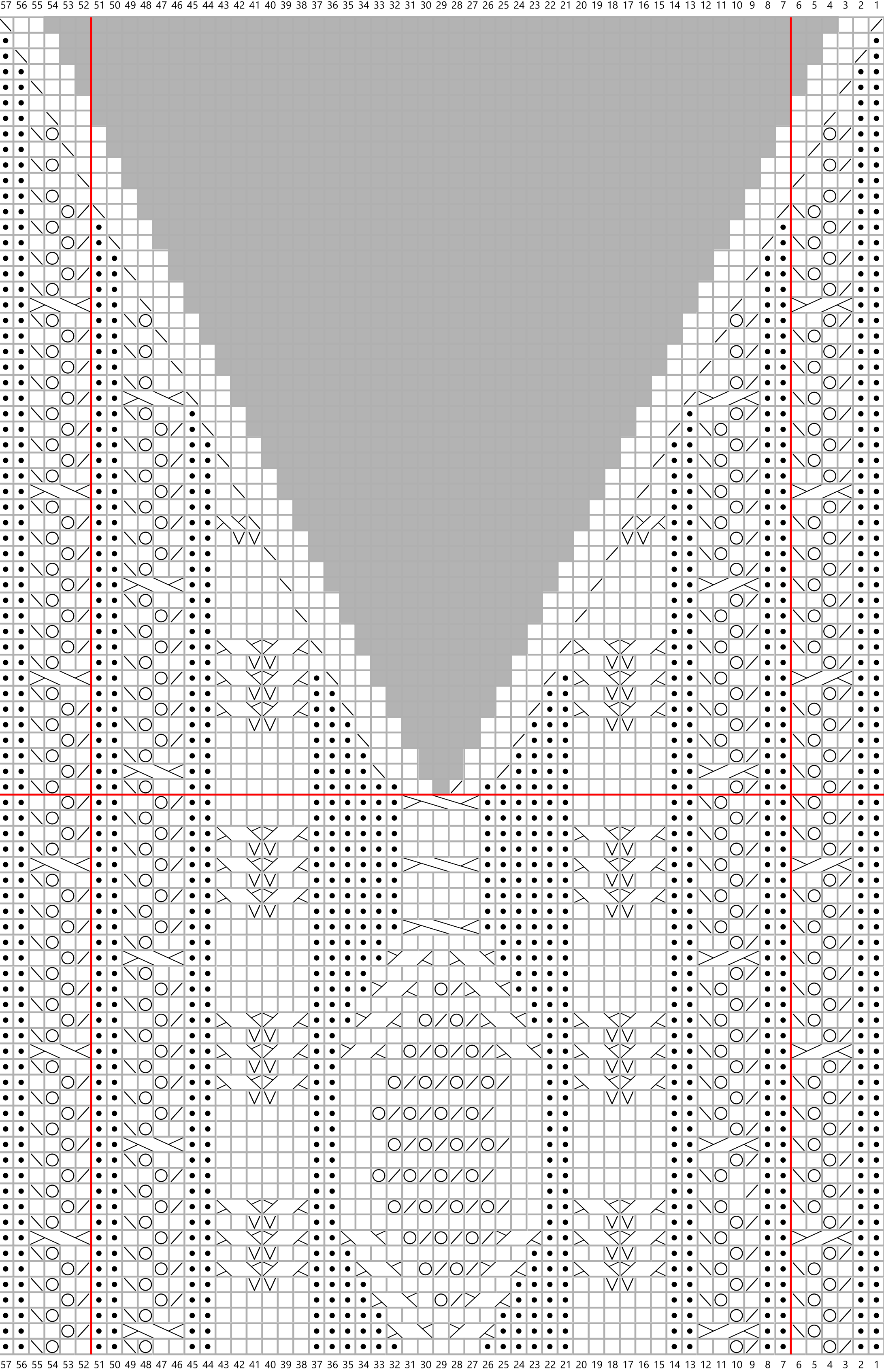


Tangerine Zest Main Chart



Key



knit



purl



yo



ssk



k2tog



2/2 RC



2/2 LC



slip



2/1 RC



2/1 LC



2/3 LC



grey no stitch



1/1 RC



1/1 LC



Work between vertical borders in size S, M, L, XL.



Work whole with in size 2XL, 3XL and 4XL.



Repeat section underneath horizontal border in the round up to neck opening.