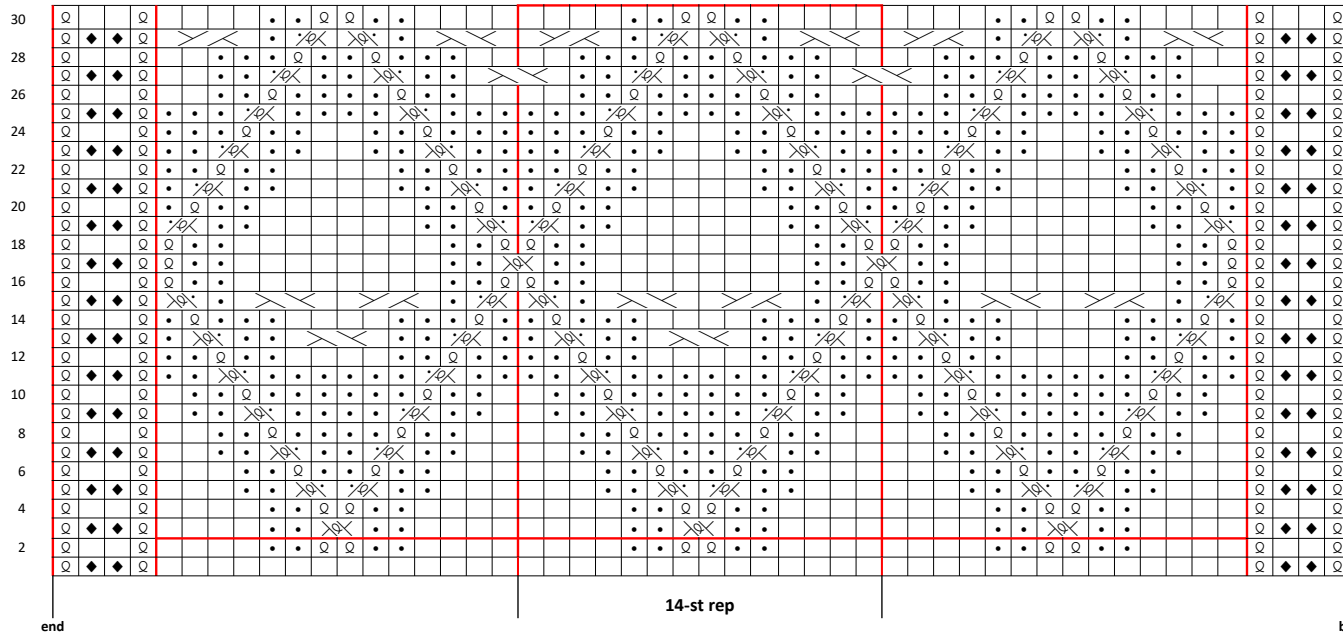


Cable Chart for Size 44 & 48



Cable chart key

- 29 2-2 LC: sl 2sts to CN and hold to front, k2, k2 from CN
- 27 2-2 RC: sl 2sts to CN and hold to back, k2, k2 from CN
- 25 1-1 LT: sl 1st to CN and hold to front, k1 tbl, k1 tbl from CN
- 23 1-1 LT purl: sl 1st to CN and hold to front, p1, k1tbl from CN
- 21 1-1 RT purl: sl 1st to CN and hold to back, k1 tbl, p1 from CN
- 19 K1 tbl on RS, p1 tbl on WS
- 17 purl on RS, knit on WS
- 15 knit on RS, purl on WS
- 13 patt rep
- 11 lp: loop stitch
- 9 ← begin patt from here, rows 1-2 have been given in the instructions
- 7
- 5
- 3 ←
- 1