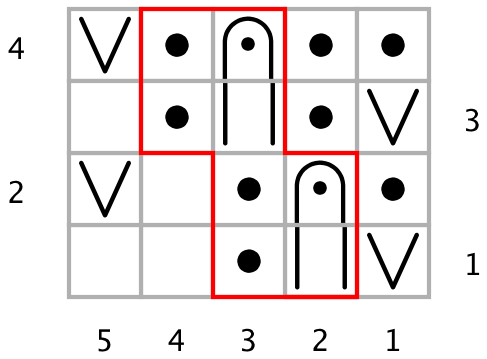





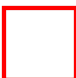


Half-Brioche Stitch

Key



Rows 1-10: Rep Rows 1-2 five times total.
 Rows 11-20: Rep Rows 3-4 five times total.
 Rep Rows 1-10 once more.

-  RS: knit
WS: purl
-  RS/WS: slip p-wise wyif
-  RS: purl
WS: knit
-  sl1yof
-  brp
-  repeat