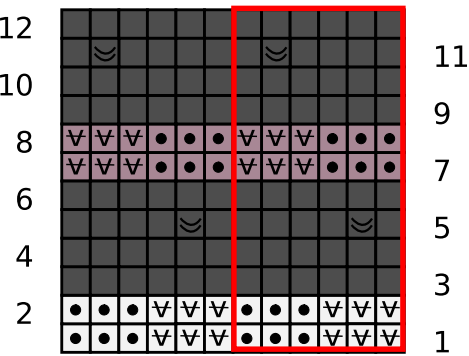
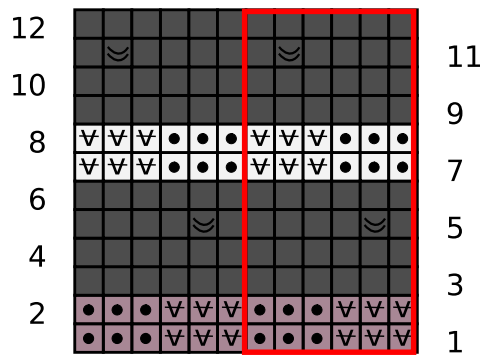


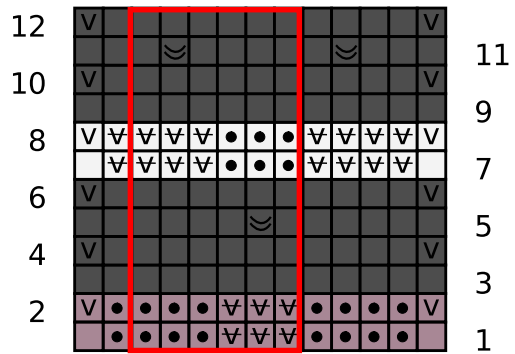
Feather Slip Stitch (for Legs)



Feather Slip Stitch (for Body, in the round)



Feather Slip Stitch (for Body, Sleeves and Hat, worked flat)



Key

■ MC, knit on RS, purl on WS

■ CC1, knit on RS, purl on WS

□ CC2, knit on RS, purl on WS

∇ sl 1 pwise with yarn to the RS of the work

∇ sl 1 pwise with yarn to the WS of the work

☞ insert ndl under loose strands from previous rows, then knit the next st

● purl on RS, knit on WS

□ pattern repeat