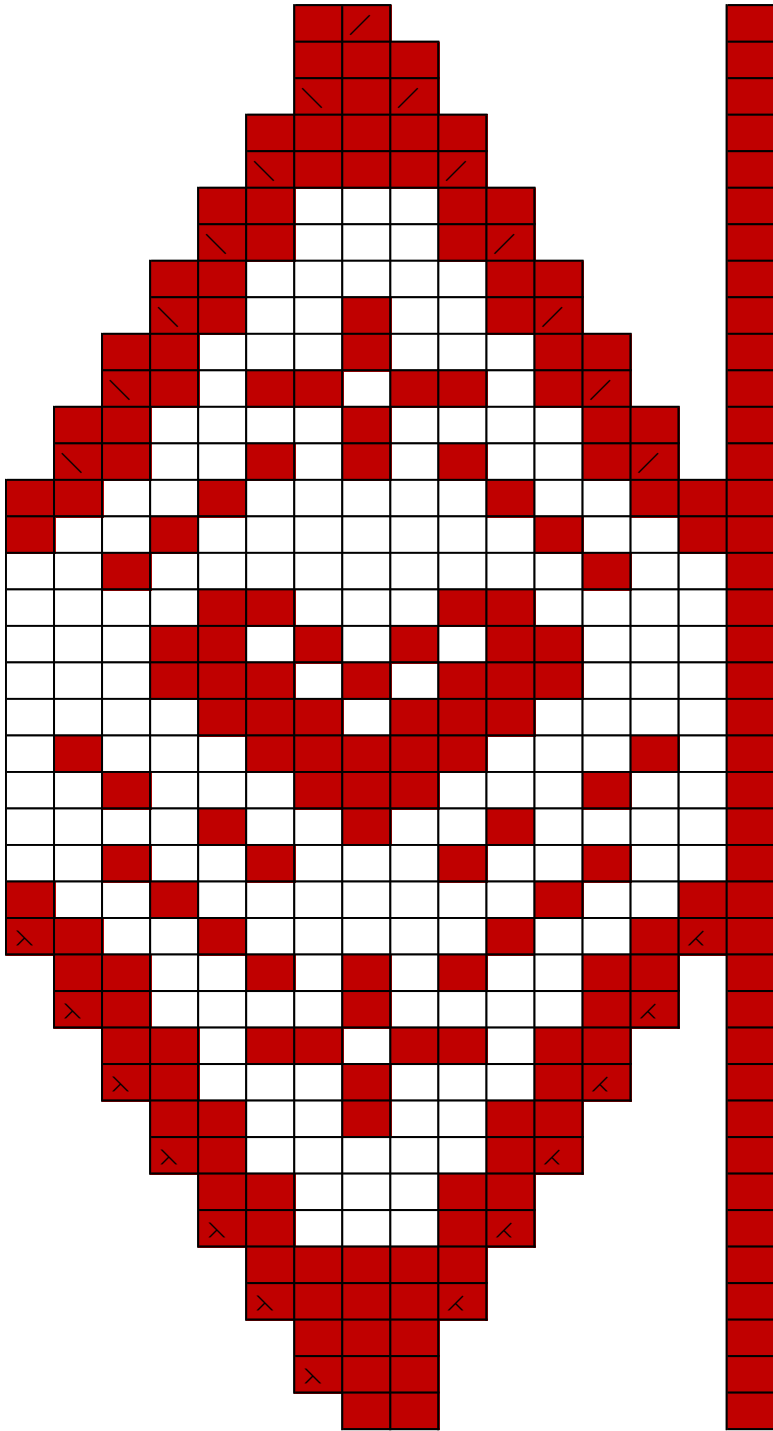


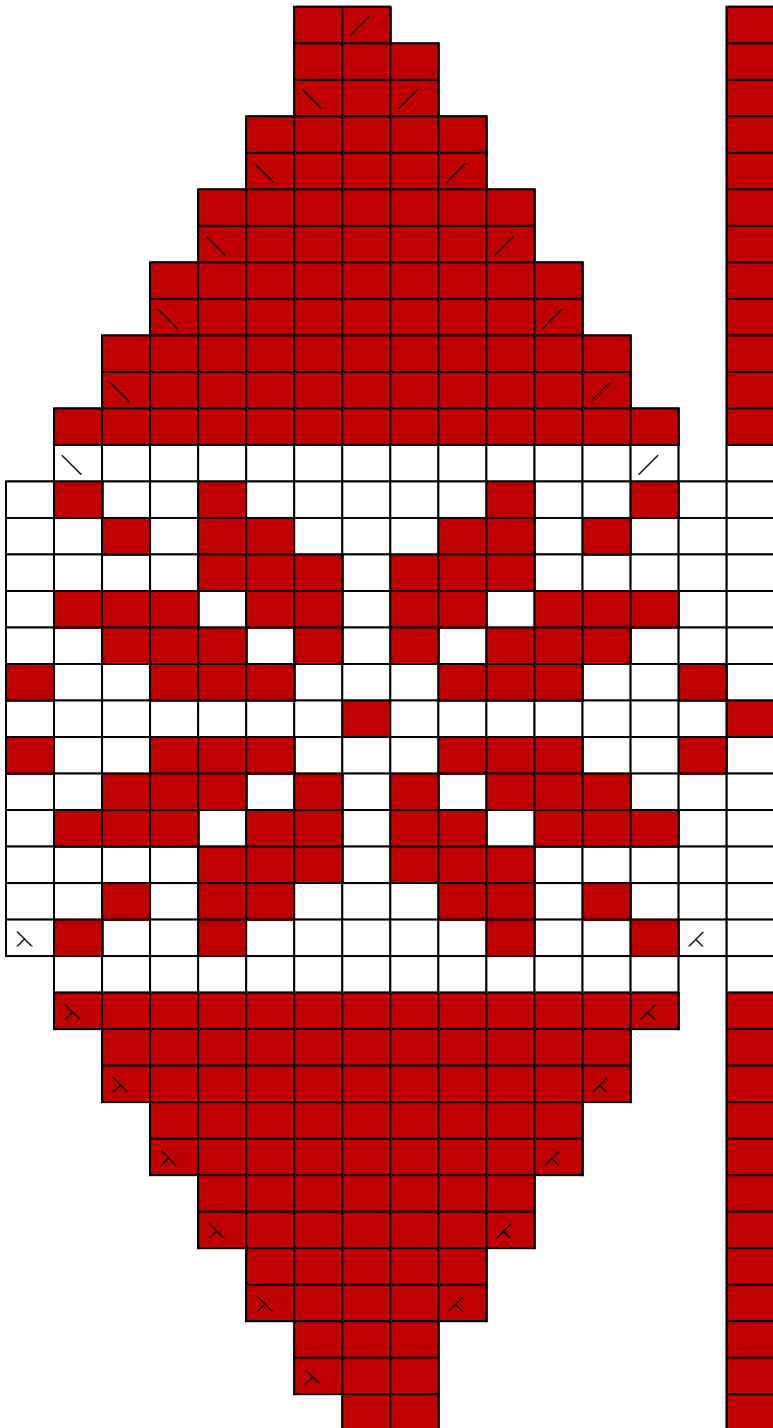
39
38
37
36
35
34
33
32
31
30
29
28
27
26
25
24
23
22
21
20
19
18
17
16
15
14
13
12
11
10
9
8
7
6
5
4
3
2
1

	K1 using MC
	K1 using CC
	K2tog using MC
	SSK using MC
	K2tog using CC
	SSk using CC
	M1L using MC
	M1R using MC
	M1L using CC
	M1R using CC



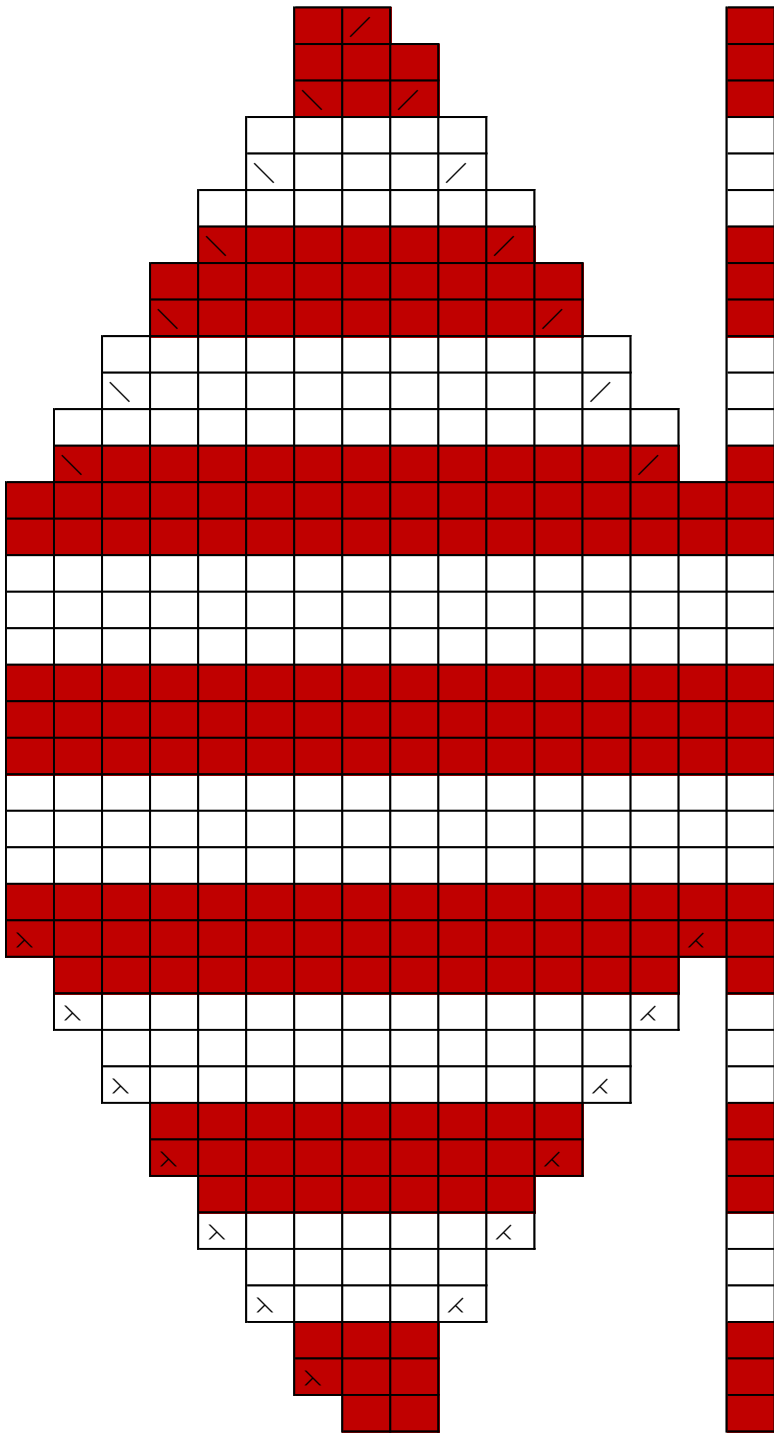
39
38
37
36
35
34
33
32
31
30
29
28
27
26
25
24
23
22
21
20
19
18
17
16
15
14
13
12
11
10
9
8
7
6
5
4
3
2
1

	K1 using MC
	K1 using CC
	K2tog using MC
	SSk using MC
	K2tog using CC
	SSk using CC
	M1L using MC
	M1R using MC
	M1L using CC
	M1R using CC



39
38
37
36
35
34
33
32
31
30
29
28
27
26
25
24
23
22
21
20
19
18
17
16
15
14
13
12
11
10
9
8
7
6
5
4
3
2
1

	K1 using MC
	K1 using CC
	K2tog using MC
	SSK using MC
	K2tog using CC
	SSk using CC
	M1L using MC
	M1R using MC
	M1L using CC
	M1R using CC



39
38
37
36
35
34
33
32
31
30
29
28
27
26
25
24
23
22
21
20
19
18
17
16
15
14
13
12
11
10
9
8
7
6
5
4
3
2
1

	K1 using MC
	K1 using CC
	K2tog using MC
	SSk using MC
	K2tog using CC
	SSk using CC
	M1L using MC
	M1R using MC
	M1L using CC
	M1R using CC