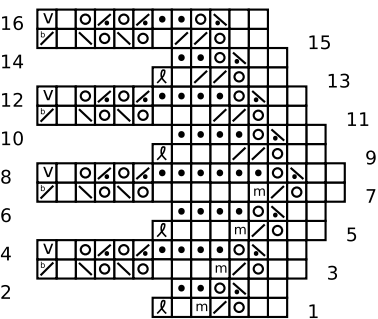
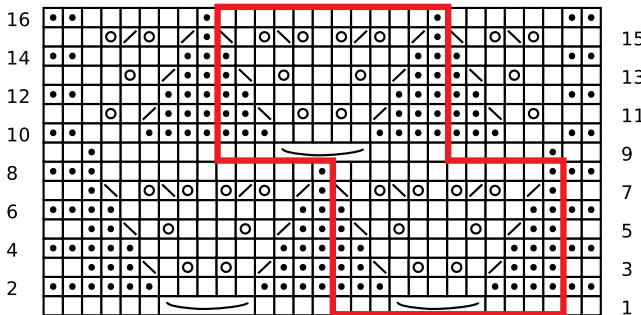


### Border Corner

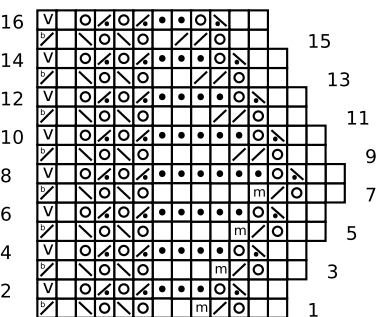


### Diamond Bows

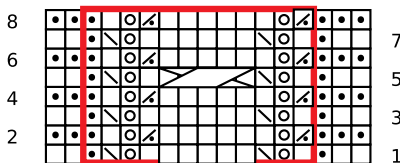


12 sts + 5

### Border



### Cables and Lace

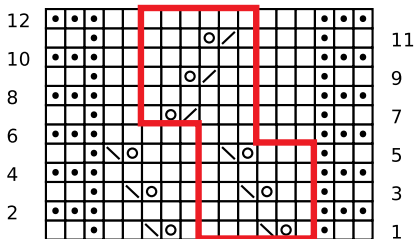


12 sts + 5

### Key

- knit on RS, purl on WS
- purl on RS, knit on WS
- k2tog on RS
- ssk on RS
- k2tog on WS
- ssk on WS
- yarn over
- make 1 stitch
- wrap next st and turn (W&T)
- k2tog tbl (last Border st together with next Shawl Body st)
- sl 1 pwise with yarn to the WS of the work

### Switchbacks



6 sts + 11

5-st wrap