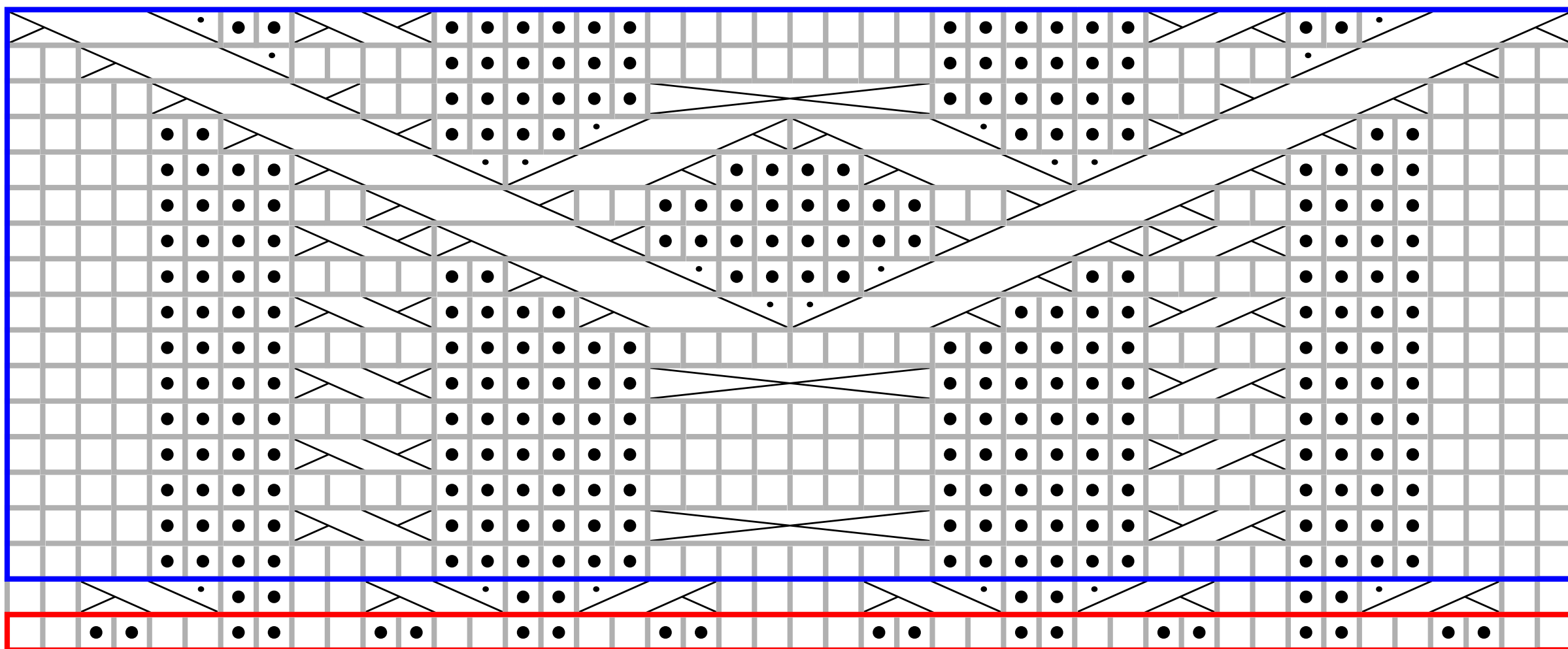


Hem pattern repetition and Main body pattern repetition

44 43 42 41 40 39 38 37 36 35 34 33 32 31 30 29 28 27 26 25 24 23 22 21 20 19 18 17 16 15 14 13 12 11 10 9 8 7 6 5 4 3 2 1



44 43 42 41 40 39 38 37 36 35 34 33 32 31 30 29 28 27 26 25 24 23 22 21 20 19 18 17 16 15 14 13 12 11 10 9 8 7 6 5 4 3 2 1

Key for main body pattern and sleeve pattern

□ RS: knit
WS: purl

◼ RS: purl
WS: knit

◻◻◻◻ 2/2 RPC

◻◻◻◻ 2/2 LPC

◻◻◻◻ 2/2 RC

◻◻◻◻◻◻◻◻ 4/4 CC

◻◻◻◻ 2/2 LC

◻◻◻◻◻◻◻◻ 4/2 RPC

◻◻◻◻◻◻◻◻ 4/2 LPC

◻◻◻◻◻◻◻◻ 4/2 RC

◻◻◻◻◻◻◻◻ 4/2 LC

◻ Hem pattern repetition

◻ Main body pattern repetition