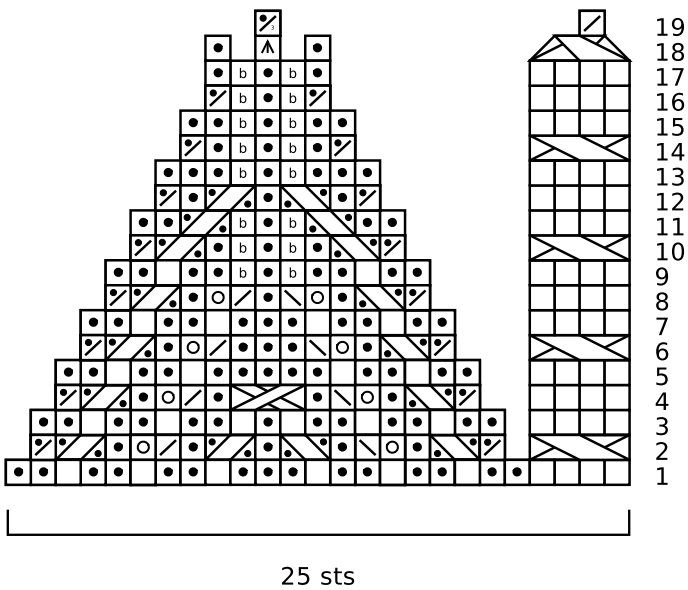
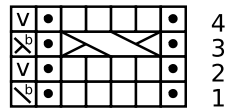


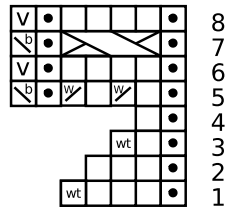
Counterpane (x4)



Edging Cable



Corner Cable



Key

- knit on RS, purl on WS
- purl on RS, knit on WS
- yarn over
- ssk
- k2tog
- p2tog
- LPT
- RPT
- 1x1x1 RC
- 2x2 LC
- knit 1 tbl
- k2tog tbl
- sl 1 pwise with yarn to the WS
- wrap and turn
- knit stitch together with wrap
- 2x2 LC dec
- sl 1-k2tog-ssso
- p3tog

begin edging here

