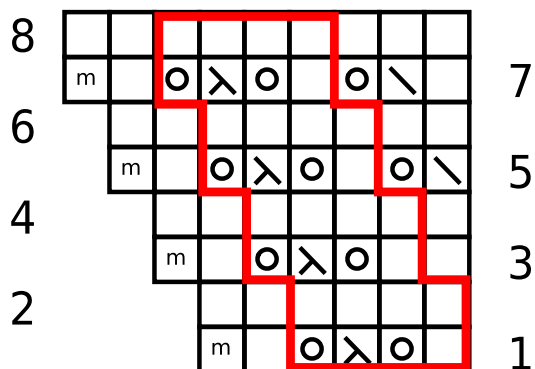


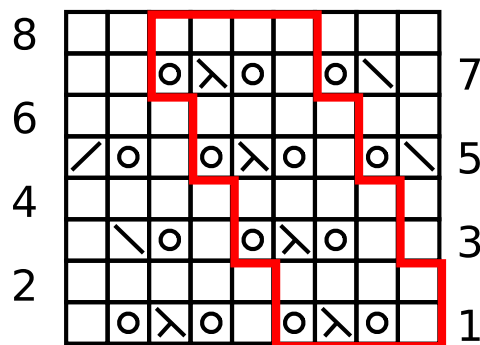
### Left Slanting Lace

#### Yoke Increase

follow this at Raglan shaping  
(begins with multiple of 4 sts + 1)



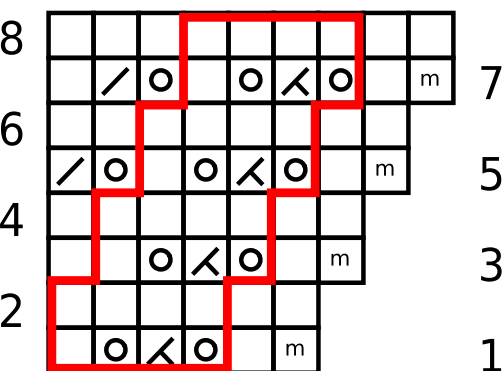
### Left Slanting Lace



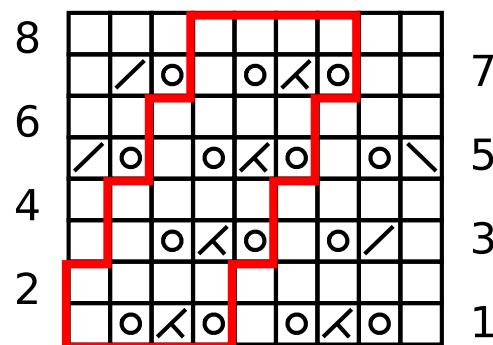
### Right Slanting Lace

#### Yoke Increase

follow this at Raglan shaping  
(begins with multiple of 4 sts + 1)



### Right Slanting Lace



#### Key

□ knit on RS, purl on WS

○ yarn over

⊗ sssk

⊠ k3tog

⊞ ssk

⊡ k2tog

⊤ sl2-k1-p2sso

m make 1 stitch

□ pattern repeat

### Straight Lace

follow this at Raglan shaping  
(begins with multiple of 4 sts + 1)

