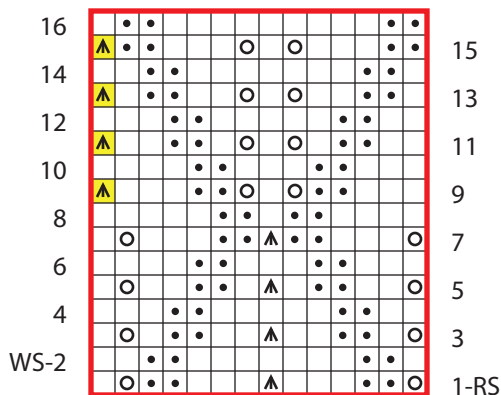
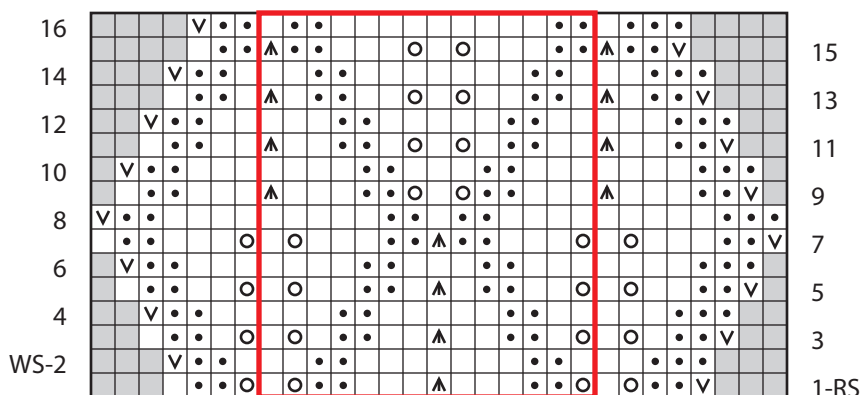


Sleeve Leaf Chart

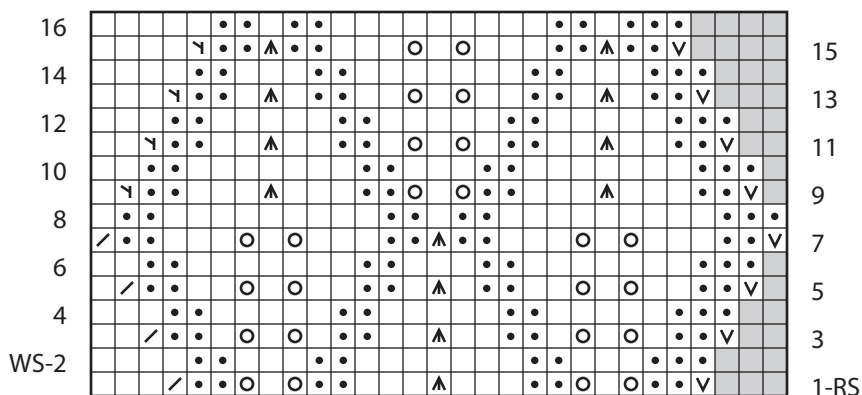


- knit on RS, purl on WS
- purl on RS, knit on WS
- sl 1 kwise wyb
- yo
- k2tog
- ssk
- s2kp
- s2kp on all reps except at end of row; work sl2tog kwise, remove m, k1, p2sso, replace m
- RLI
- LLI
- no stitch
- pattern repeat

Body Leaf Chart



Right Front Leaf Chart



Left Front Leaf Chart

