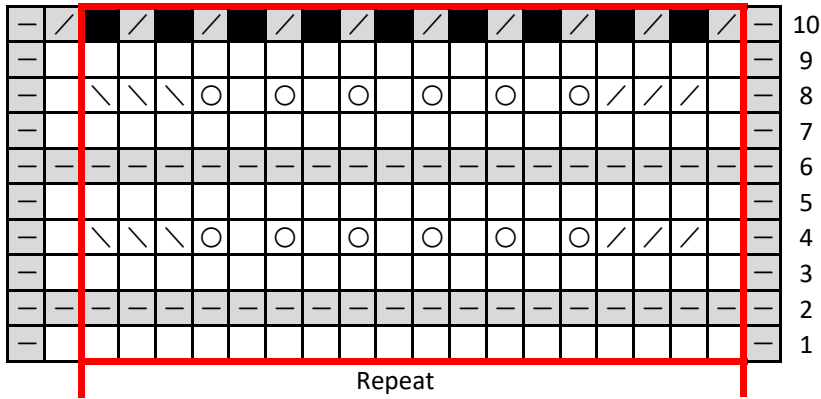
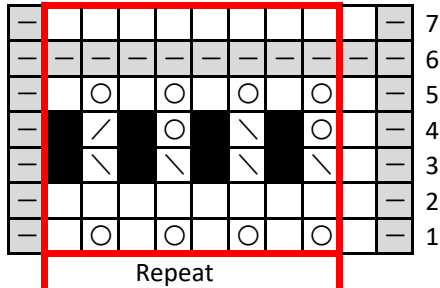


Feather & Fan Lace

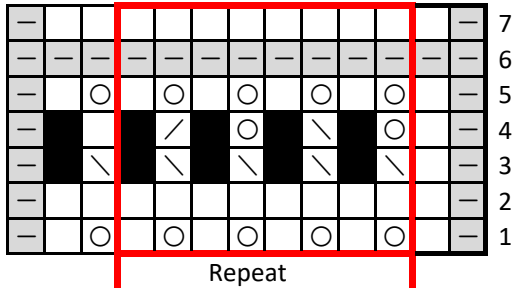


- Knit on RS, Purl on WS
- Purl on RS, Knit on WS
- K2tog on RS, P2tog on WS
- Ssk on RS, Ssp on WS
- P2tog on RS, K2tog on WS
- YO
- No Stitch

Cathead Lace 1



Cathead Lace 2



Cathead Lace 3

