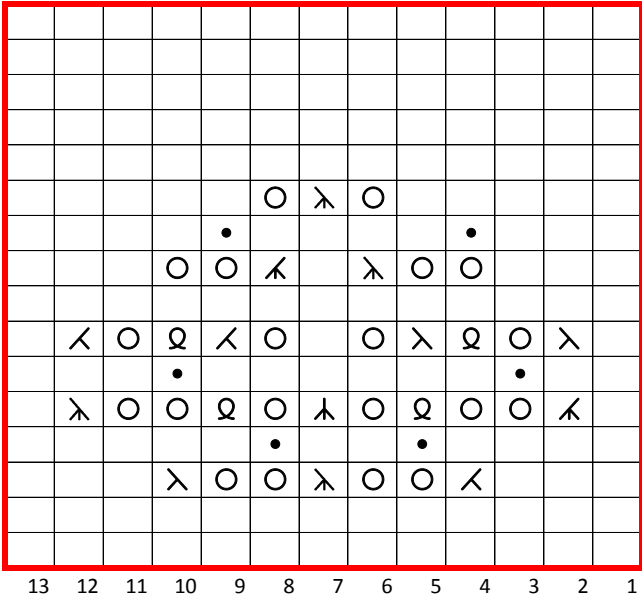
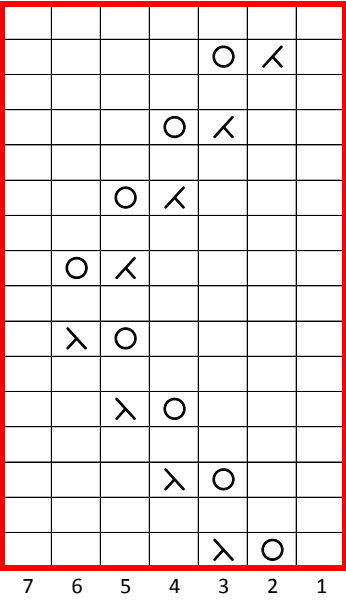
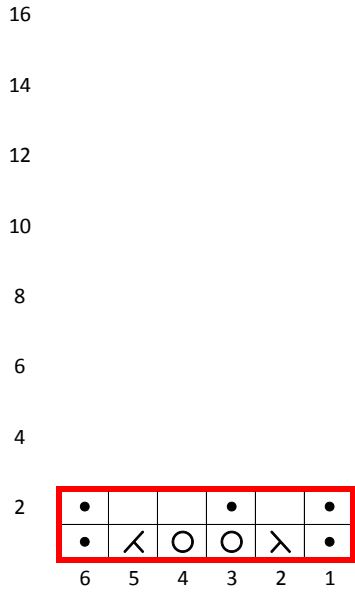


Lace patt 3 [6-st rep]

Lace patt 2 [7 st-rep]

Lace patt 1 [13 st-rep]

Chart key



- 15 no stitch
- 13 k on RS, p on WS
- 11 p on RS, k on WS
- 9 twisted stitch - knit tbl
- 7 yarnover
- 5 sk2p - sl1 kwise, k2tog, pss0
- 3 s2kp2 - sl2 kwise, k1, p2sso
- 1 k2tog
- ssk - slip 1 kwise, slip-1 kwise, k2 tog tbl
- k3tog
- pattern repeat

Lace edging

