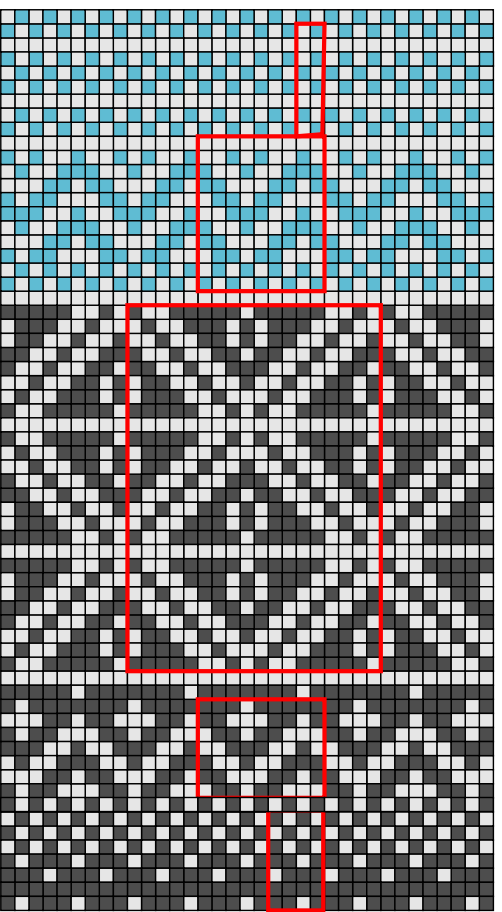


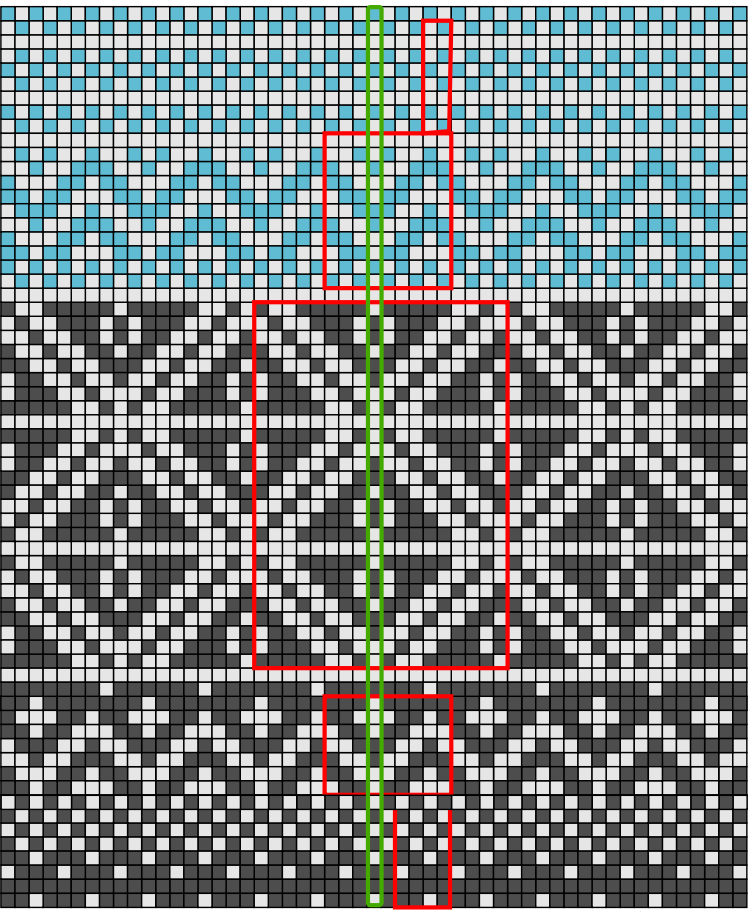
Fair Isle (Sleeves)



67
66
65
64
63
62
61
60
59
58
57
56
55
54
53
52
51
50
49
48
47
46
45
44
43
42
41
40
39
38
37
36
35
34
33
32
31
30
29
28
27
26
25
24
23
22
21
20
19
18
17
16
15
14
13
12
11
10
9
8
7
6
5
4

↑
3X
↑
Large
↑
1X
↑
Small
↑
2X
↑
Medium

Fair Isle (Front/Back)



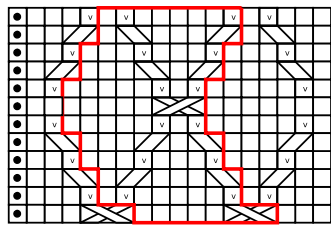
67
66
65
64
63
62
61
60
59
58
57
56
55
54
53
52
51
50
49
48
47
46
45
44
43
42
41
40
39
38
37
36
35
34
33
32
31
30
29
28
27
26
25
24
23
22
21
20
19
18
17
16
15
14
13
12
11
10
9
8
7
6
5
4

↑
Small
↑
2X
↑
Medium
↑
3X
↑
Large
↑
1X

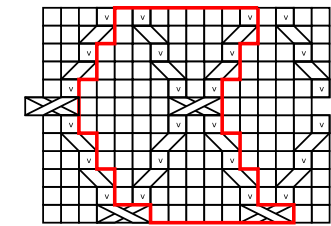
Key

- MC
- CC1
- CC2
- knit
- purl
- ▧ RT
- ▨ LT
- ▩ 1x1x1 RC
- 1x1x1 LC
- ⊏ sl 1 pwise wyib
- pattern repeat

Slipped Lattice (for Sleeves)



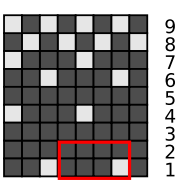
Slipped Lattice (for Body)



12
11
10
9
8
7
6
5
4
3
2
1

multiple of 8 sts

Fair Isle chart
(for Body and Sleeves before Raglan Shaping)



9
8
7
6
5
4
3
2
1