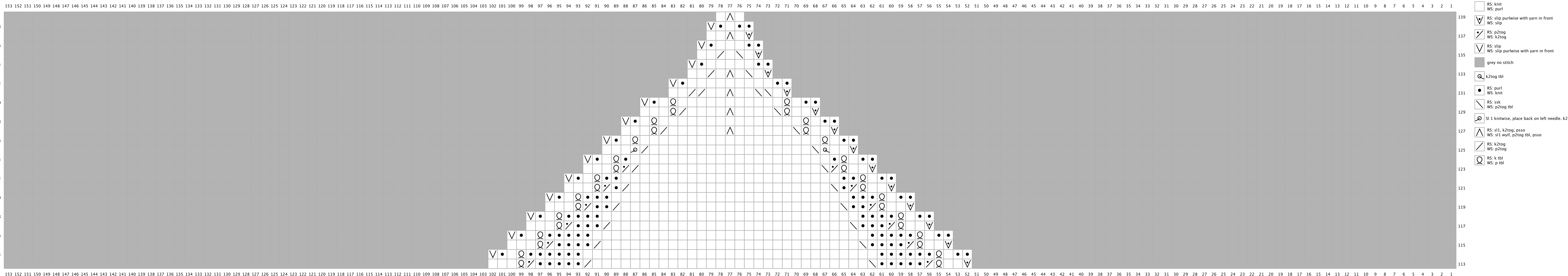


Rows 113-139 of Heart Blanket Chart



- Key
- RS: knit
WS: purl
 - RS: slip purlwise with yarn in front
WS: slip
 - RS: p2tog
WS: k2tog
 - RS: slip
WS: slip purlwise with yarn in front
 - grey no stitch
 - k2tog tbl
 - RS: purl
WS: knit
 - RS: ssk
WS: p2tog tbl
 - sl 1 knitwise, place back on left needle. k2tog
 - RS: sl1, k2tog, pss0
WS: sl1 wyif, p2tog tbl, pss0
 - RS: k2tog
WS: p2tog
 - RS: k tbl
WS: p tbl