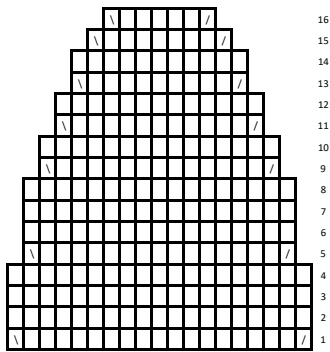
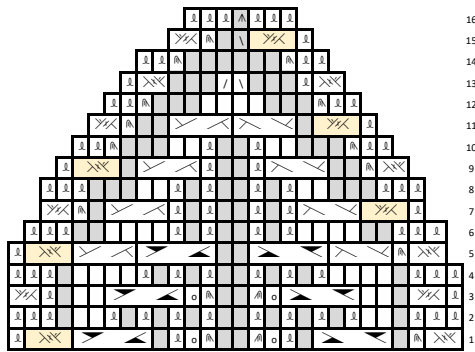


Tip Decrease Chart 2



Tip Decrease Chart 1



K

P

/ K2tog

\ Ssk

⌊ K1tbl

⌋ S1 pwise, S1 tbl, slip both back purwise, k2tog

⌋ k2tog tbl

○ YO

⌋ LT, knitting tbl

⌋ S1 pwise, S1 tbl, slip both back purwise, RT

⌋ 2/2 LC, Place 2 sts on cn, hold in front, k2 from left needle, k2 from cn

⌋ 2/2 LC, Place 2 sts on cn, hold in back, k2 from left needle, k2 from cn

⌋ Place 2 sts on cn, hold in back, (k1tbl, p1, k1tbl) from left needle, p2 from cn

⌋ Place 3 sts on cn, hold in front, p2 from left needle, (k1tbl, p1, k1tbl) from cn

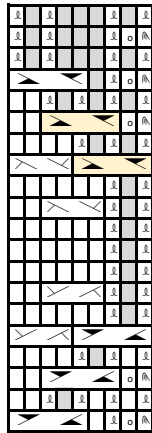
⌋ Place 2 sts on cn, hold in back, (k1tbl, p1, k1tbl) from left needle, (p1, k1) from cn

⌋ Place 3 sts on cn, hold in front, (k1, p1) from left needle, (k1tbl, p1, k1tbl) from cn

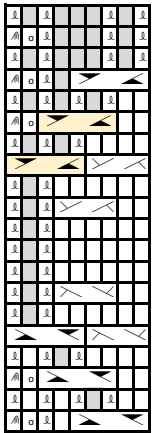
⌋ Place 1 st on cn, hold in back, k2tog tbl from left needle, k1tbl from cn

⌋ Place 1 on cn, hold in front, k2tog from left needle, k1tbl from cn

Left Cable Pattern



Right Cable Pattern



20

19

18

17

16

15

14

13

12

11

10

9

8

7

6

5

4

3

2

1

Braided Cable

Pattern



4

3

2

1