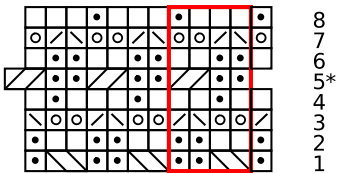


Leaf in a Leaf

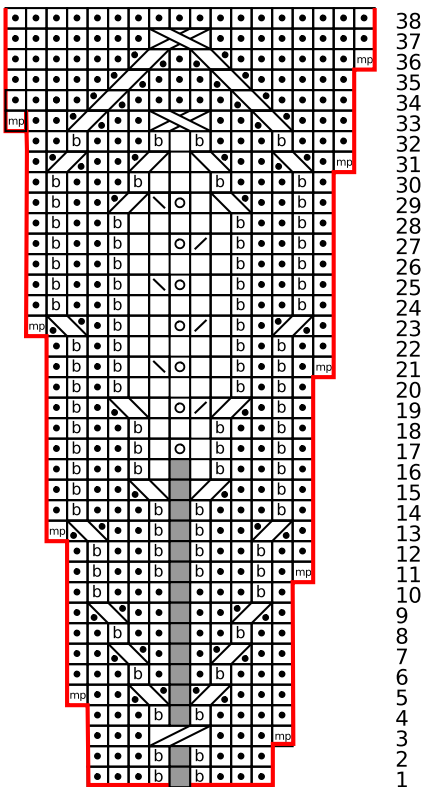
Crosshatch



* move marker 1 st to the right on rnd 5.
move it back to original spot on row 6

Key

- knit
- no stitch
- purl
- knit 1 through the back loop
- k2tog
- ssk
- yo
- LPT
- RPT
- LT
- RT
- make 1 stitch purl
- 1x1x1 LC
- P2tog on RS (1 edging stitch with a blanket stitch)
- sl 1 pwise wyif on WS
- pattern repeat



Edging

