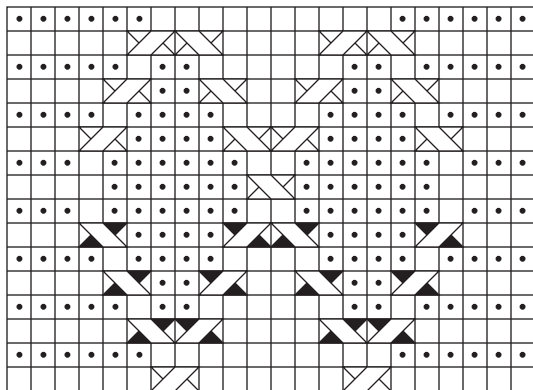


Back Panel



15

13

11

9

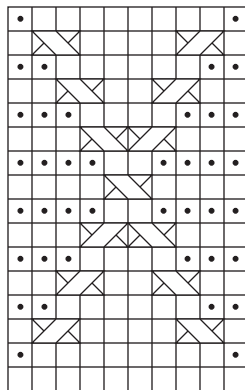
7

5

3

1

Front Panel



16

15

14

13

12

11

10

9

8

7

6

5

4

3

2

1

□ knit on RS, purl on WS

• purl on RS, knit on WS

↘↙ 1/1RC

↙↘ 1/1LC

↘↙ 1/1RPC

↙↘ 1/1LPC