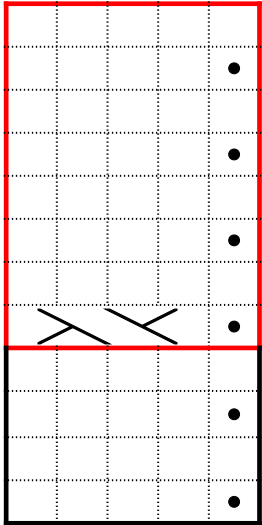
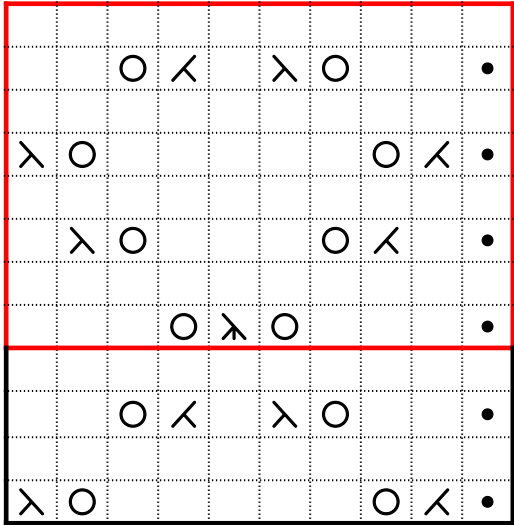


Cable patt 5-st rep









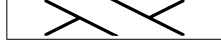
11
9
7
5
3
1

Lace patt 10-st rep



11
9
7
5
3
1

Chart Key

-  k on RS, p on WS
-  p on RS & WS
-  yarnover
-  K2tog
-  ssk
-  sk2p - sl1 kwise, k2tog, pss0
-  2-2 LC: sl 2sts to CN and hold to front, k2, k2 from CN

