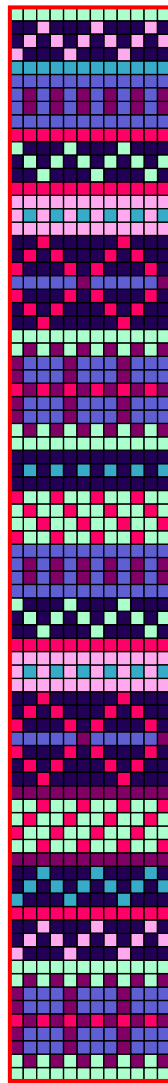
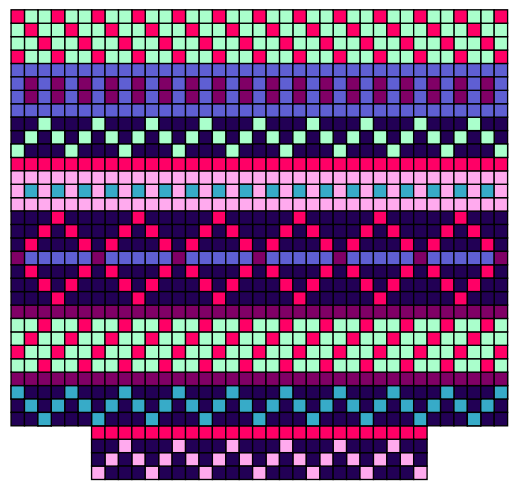


Bag Body



80
79
78
77
76
75
74
73
72
71
70
69
68
67
66
65
64
63
62
61
60
59
58
57
56
55
54
53
52
51
50
49
48
47
46
45
44
43
42
41
40
39
38
37
36
35
34
33
32
31
30
29
28
27
26
25
24
23
22
21
20
19
18
17
16
15
14
13
12
11
10
9
8
7
6
5
4
3
2
1

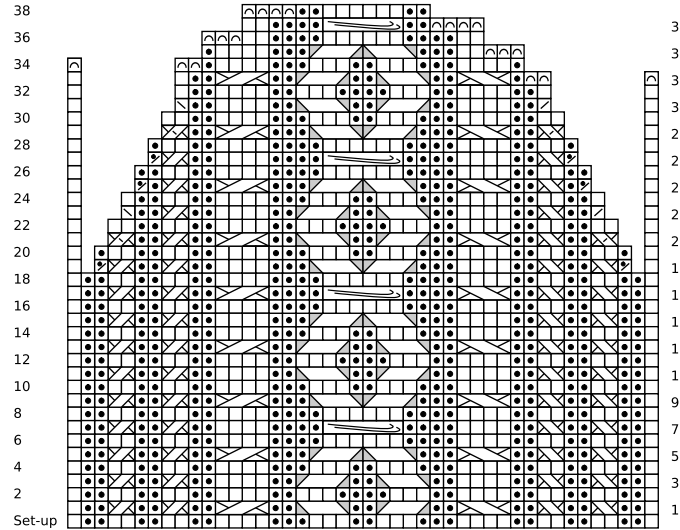
Pocket



Key

- 12271 heliotrope (A)
- 71660 honeydew (B)
- 12277 periwinkle (C)
- 12292 honeysuckle (D)
- 71662 turquoise (E)
- 12275 mulberry (F)
- 12144 starfish (G)
- knit on RS, purl on WS
- purl on RS, knit on WS
- ▧ RT
- ▨ LT
- ▩ 2x2 RC
- 2x2 LC
- 3x1 LPC
- ▬ 3x1 RPC
- ▭ 6 st double wrap
- ▮ p2tog
- ▯ LTD
- ▰ RTD
- ▱ BO 1
- ▲ k2tog
- △ ssk

Flap



38
36
34
32
30
28
26
24
22
20
18
16
14
12
10
8
6
4
2
Set-up

37
35
33
31
29
27
25
23
21
19
17
15
13
11
9
7
5
3
1