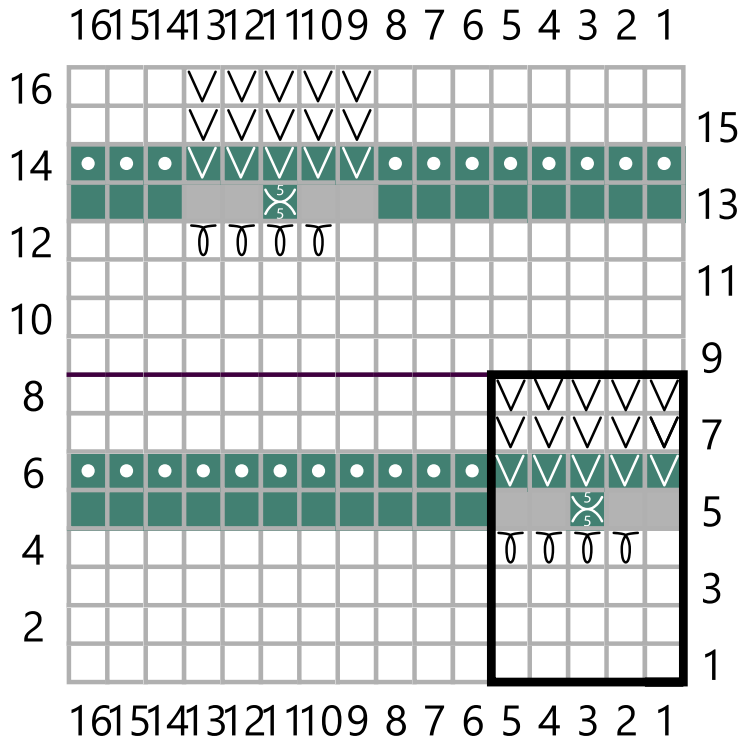


Main pattern



Key

- MC
- CC
- grey: no stitch
- RS: knit, WS: purl
- RS: purl, WS: knit
- 0 RS: knit 1 elongated st, WS: purl 1 elongated st
- 5/5 5 into 5: (k5togtbl, yo) twice without letting those 5 sts drop, k5togtbl
- ∇ RS: slip purlwise with yarn in back, WS: slipt purlwise with yarn in front
- Stitch Bundle