

Eyelet Chart

Key

20 19 18 17 16 15 14 13 12 11 10 9 8 7 6 5 4 3 2 1

8

7

6

4

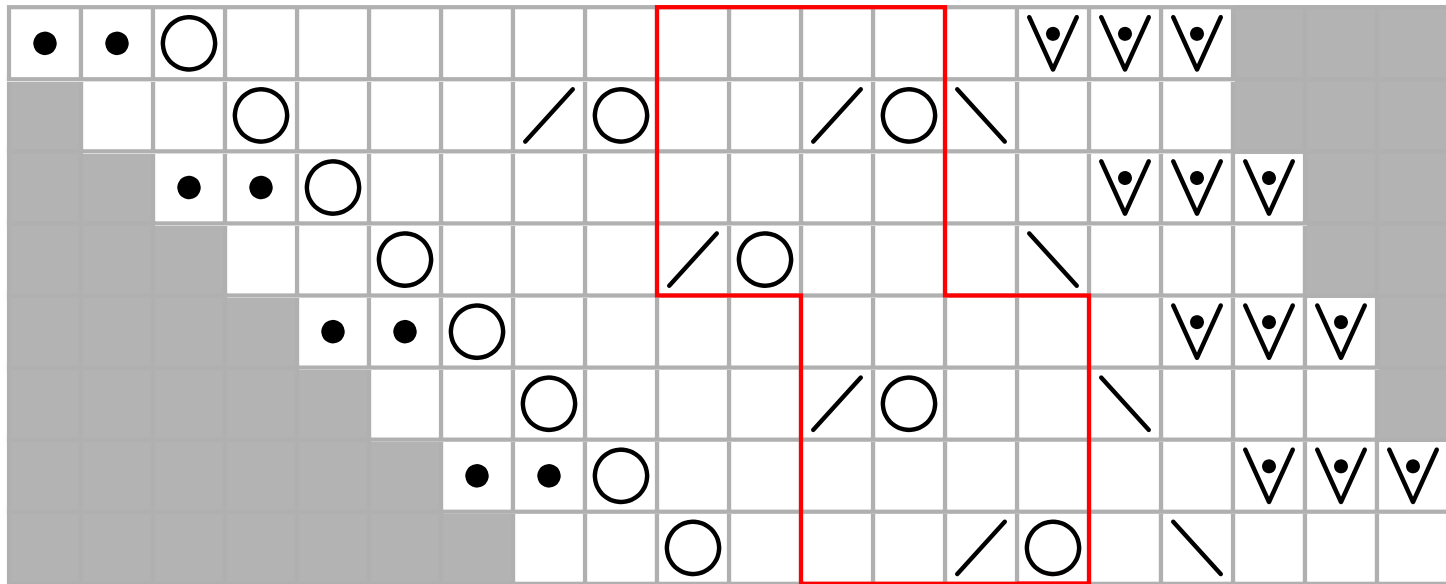
2

7

5

3

1



□ RS: knit
WS: purl

● RS: purl
WS: knit

■ grey no stitch

○ yo

∇ slip purlwise with yarn in front

\ ssk

/ k2tog

□ eyelet repeat