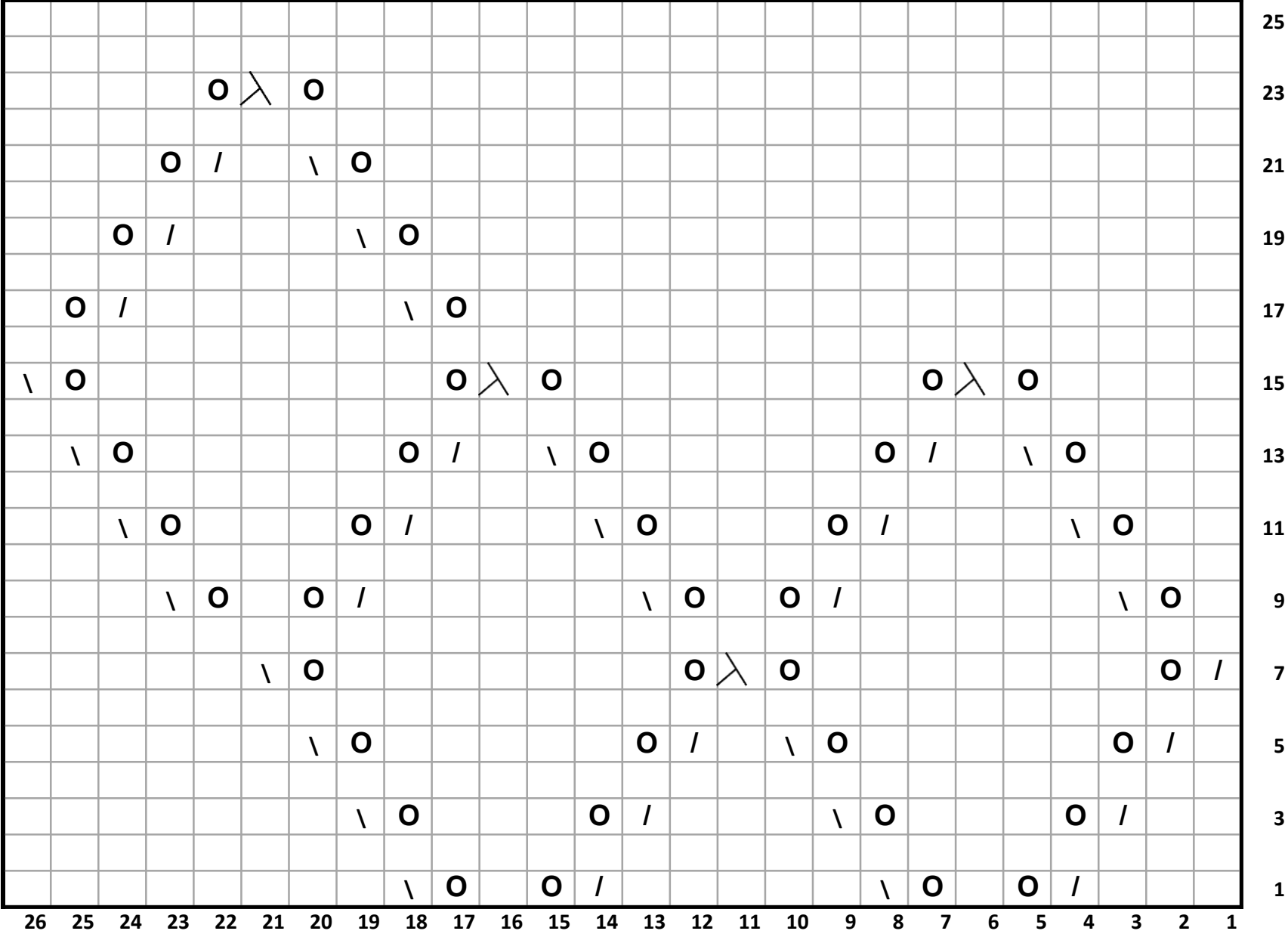

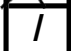




# Life Through Jean Holes - Chart 2



**Legend:**

-  Double decrease – slip 2 as if to knit, K next stitch, PSSO the K stitch
-  Knit 2 stitches together
-  Slip, slip, knit these 2 stitches together – a decrease
-  Yarn over

**Note:** Knit sts at the beginning and end of row are not charted.